

Preliminary L2β budget (\$)

	Common	Prototypes (x 4) price per board	Production (x 30) price per board
Engineering	9095		
Mechanics (front panel, stiffeners, rails, dice)		1065	265
PCB	1880		535
Components		1185	1185
Assembly	1865	160	135
Tests	2000	65	25
Total	14840	3675	2145

1st order : Engineering and mechanics
2nd order : Components (actually split in 2 orders)
3rd order : PCB manufacturing - prototypes
4th order : Assembly and tests - prototypes
5th order : PCB manufacturing - production
6th order : Mechanics, Assembly and tests - production

} 2001
} 2002

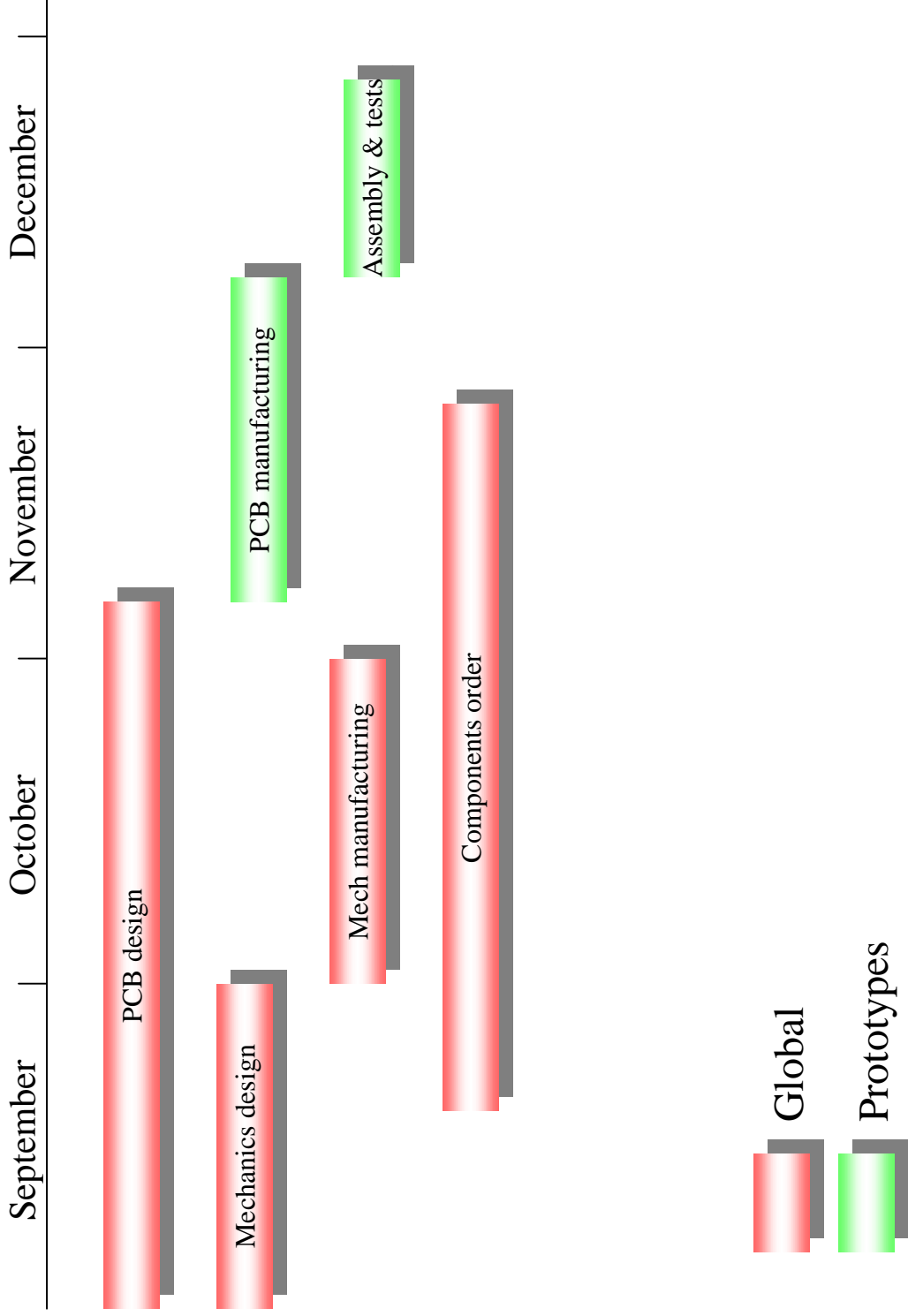
Total price :

Common + proto	(x 4)	: 29540 \$
Production	(x 30)	: 64350 \$

Global price :

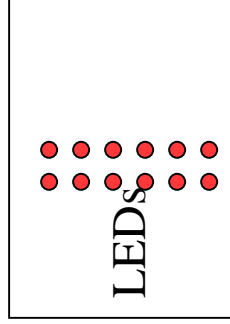
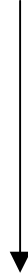
Common + proto + prod	(x34)	: 93890 \$
Common + proto + prod	(x 1)	: 2760 \$ /card

Schedule

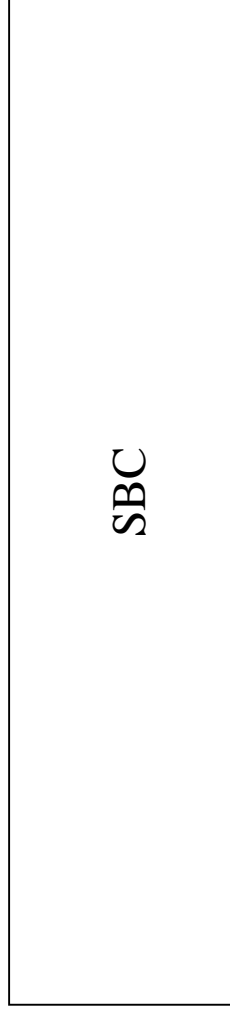
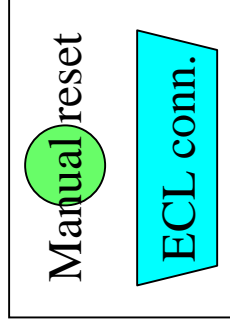


L2β Front Panel Sketch

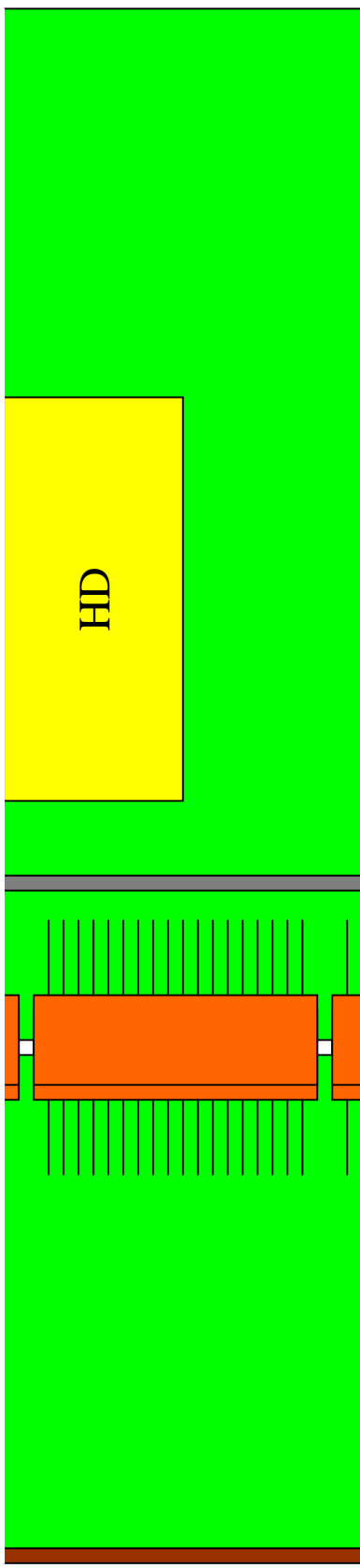
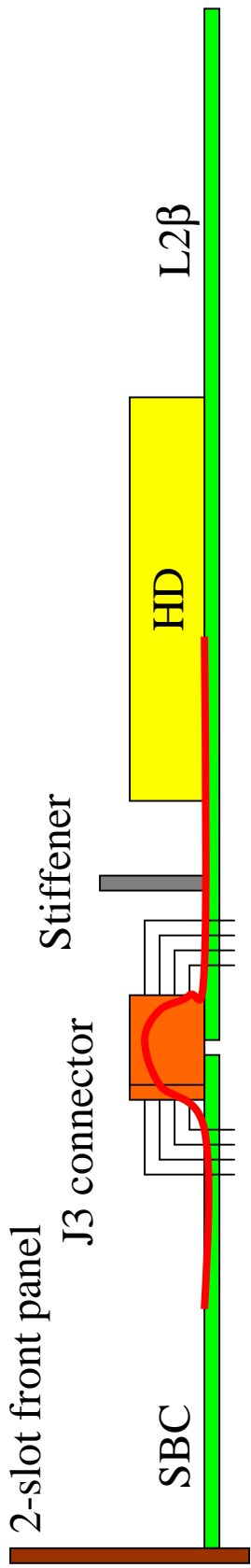
TOP



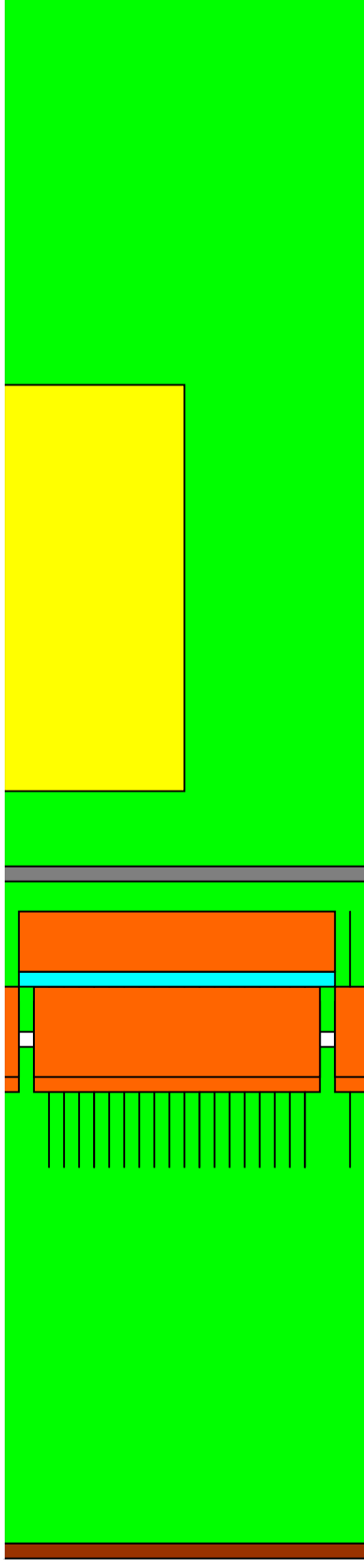
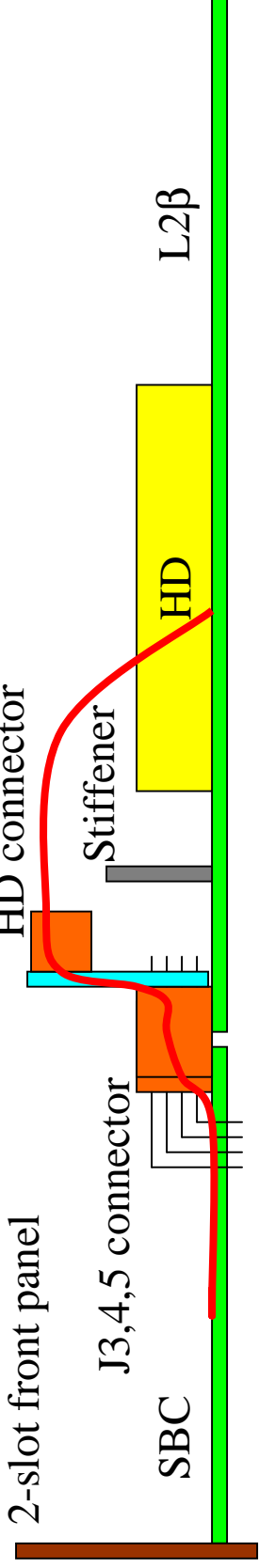
BOTTOM



Initial HD connection

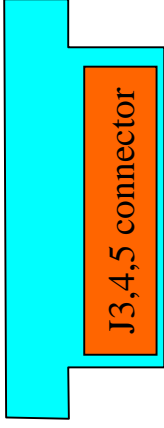


HD connection with adapter card



Adapter card

TOP



Bottom

