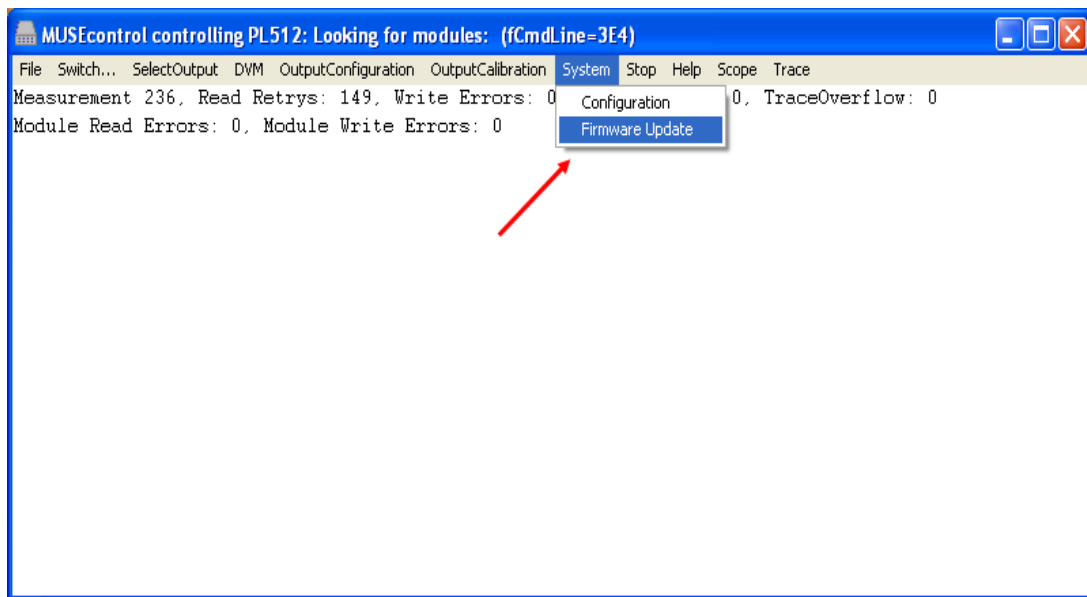


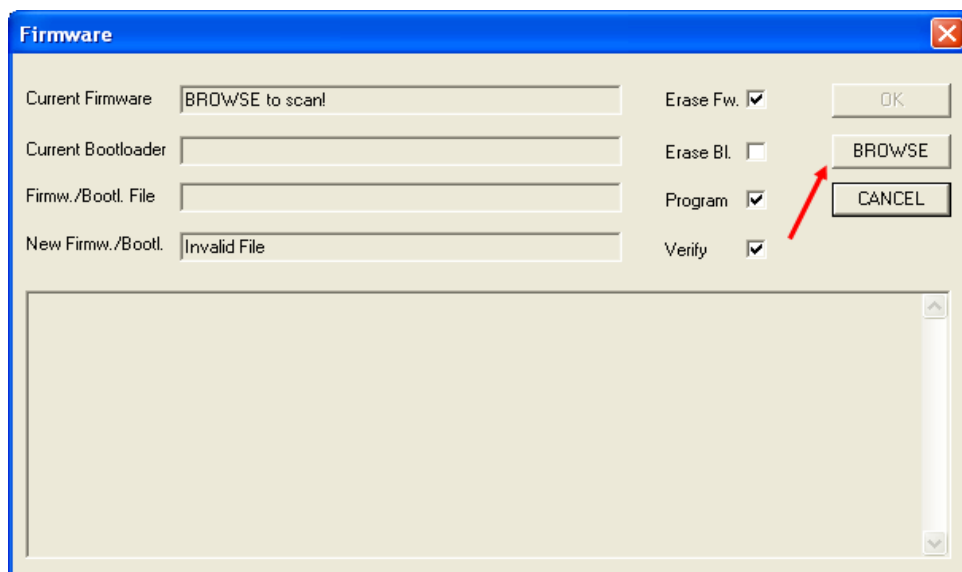
Short Instruction to update Bootloader and Firmware for Muhse

(for Bootloader from revision 1.5 and Firmware from revision 2.*.0.15)

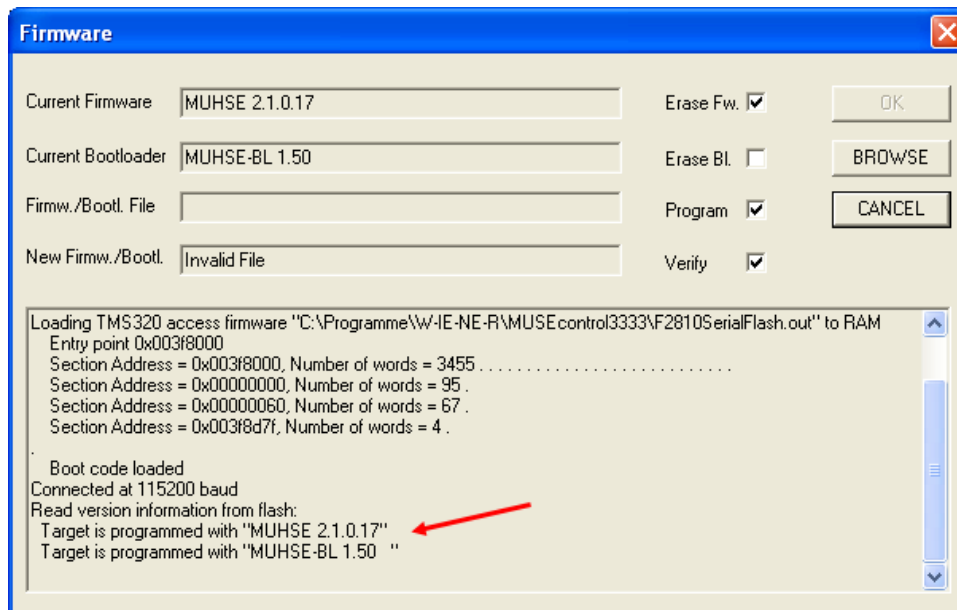
Step 1) You need the muhse control program form revision 2.0.910.0. You can download it from the wiener web site "www.wiener-d.com" or via the direct link "<http://www.wiener-d.com/Support/MUSEcontrol/MUSEcontrolInstall-2.0.910.0.exe>". Start the muhse control program and select the tab "system". In the opened pull down menu select the item "Firmware Update" to update the device via USB.



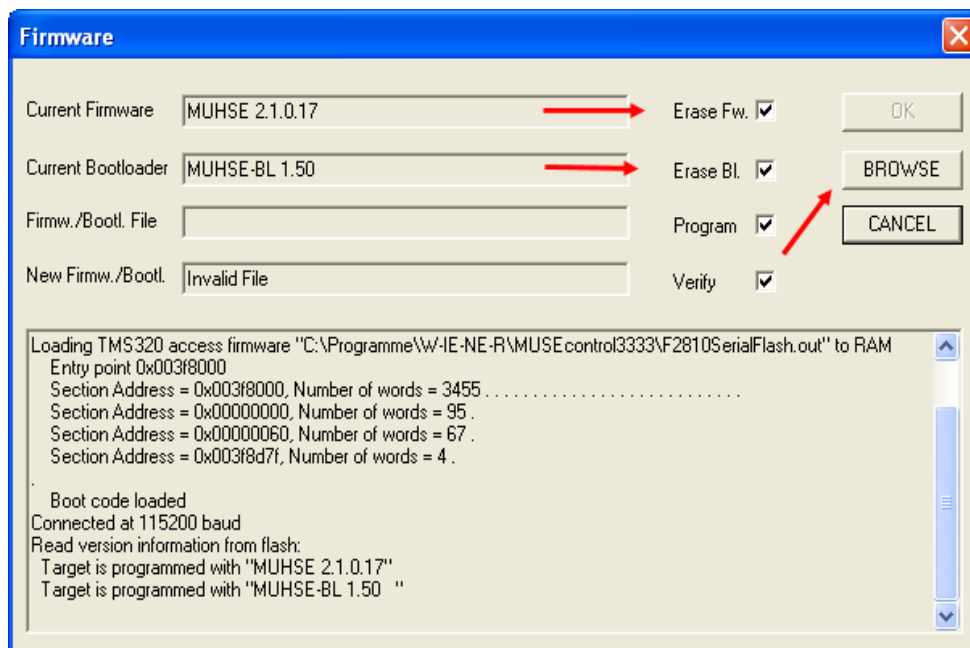
Step 2) Hit the button "browse" to scan the device for current version of bootloader and firmware.



Step 3) Check the version of the current firmware or bootloader. There are three options:

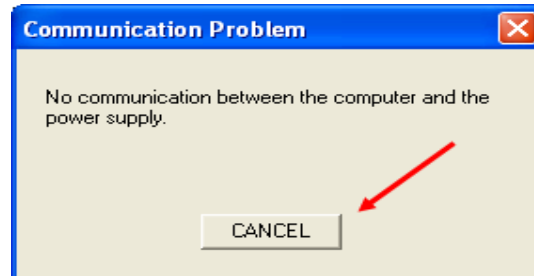


Option 1) Check “Erase Fw.” (erase firmware) and “Erase BL.” (erase bootloader) if the current firmware is older than 2.*.0.15 or it is a firmware without bootloader. After that push the button “browse” to scan the flash. In some minutes select the new bootloader file in the automatically opened file menu. Press the button “Ok”. Now the whole flash will be erased and the new bootloader will be installed.

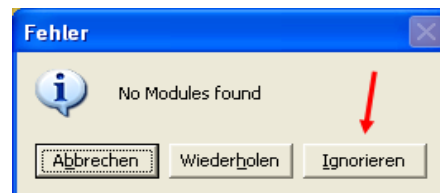


When the install process is done hit the button “cancel” to restart the system. It is recommended to close the muhse control program before restarting.

A window which indicates a communication problem appears. The reason for this is that only the bootloader without firmware is installed. Ignore this message by pushing the button “cancel”.

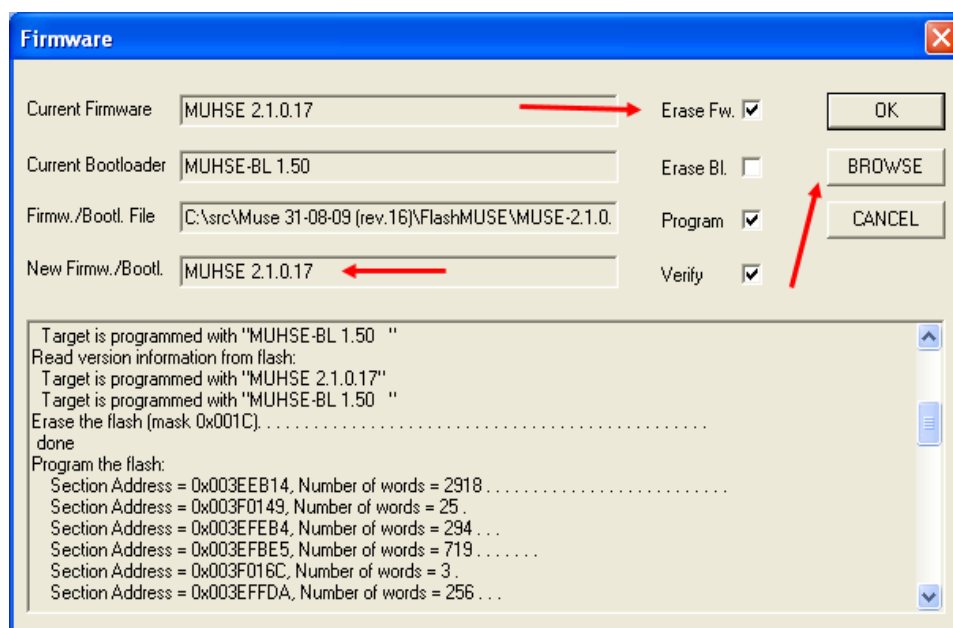


Also ignore the no modules message to hit the button “Ignorieren”.



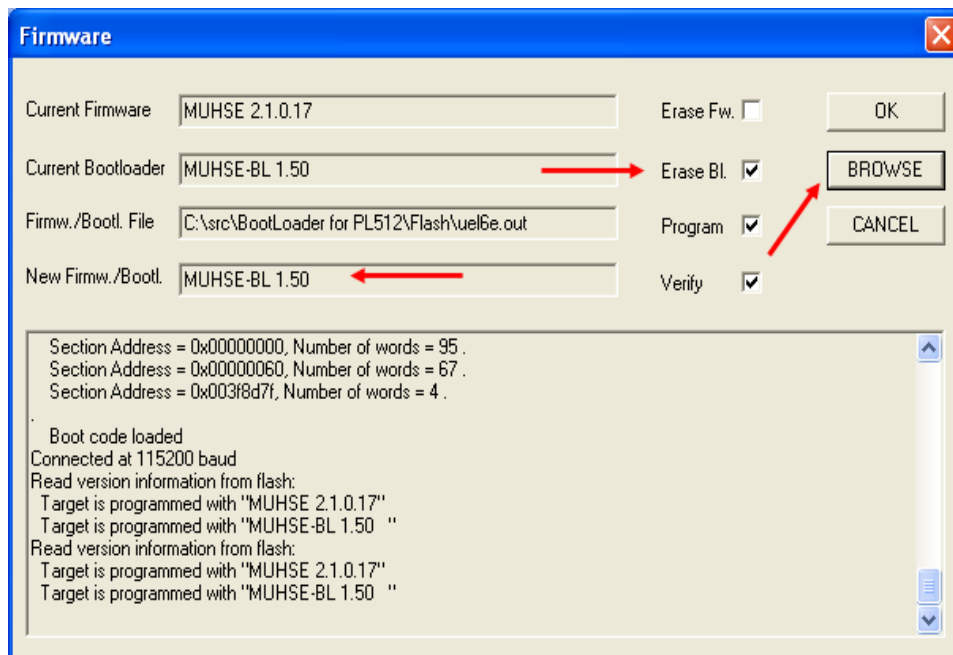
Follow the step 1 and 2. Execute the instructions of option 2.

Option 2) Check “Erase Fw.” (erase firmware) if there no current, legal firmware is available or a newer one should be installed. After that push the button “browse” to scan the flash. In some minutes select the new firmware file in the automatically opened file menu. Press the button“Ok”. Now the firmware partition in the flash will be formatted and the new firmware will be installed.



When the install process is done hit the button “cancel” to restart the system. It is recommended to close the muhse control program before restarting.

Option 3) Check “Erase BL.” (erase bootloader) if there an older bootloader (from version 1.5) and a newer one should be installed. If no bootloader is available chose option 1. After that push the button “browse” to scan the flash. In some minutes select the new bootloader file in the automatically opened file menu. Press the button“Ok”. Now the bootloader partition in the flash will be formatted and the new bootloader will be installed.



When the install process is done hit the button “cancel” to restart the system. It is recommended to close the muhse control program before restarting.