

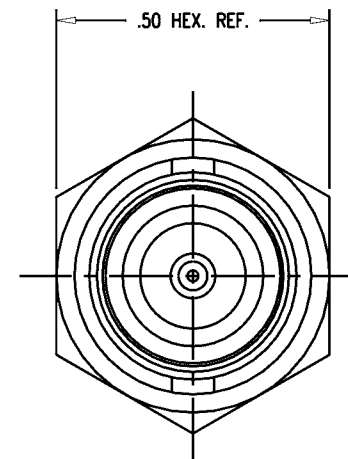
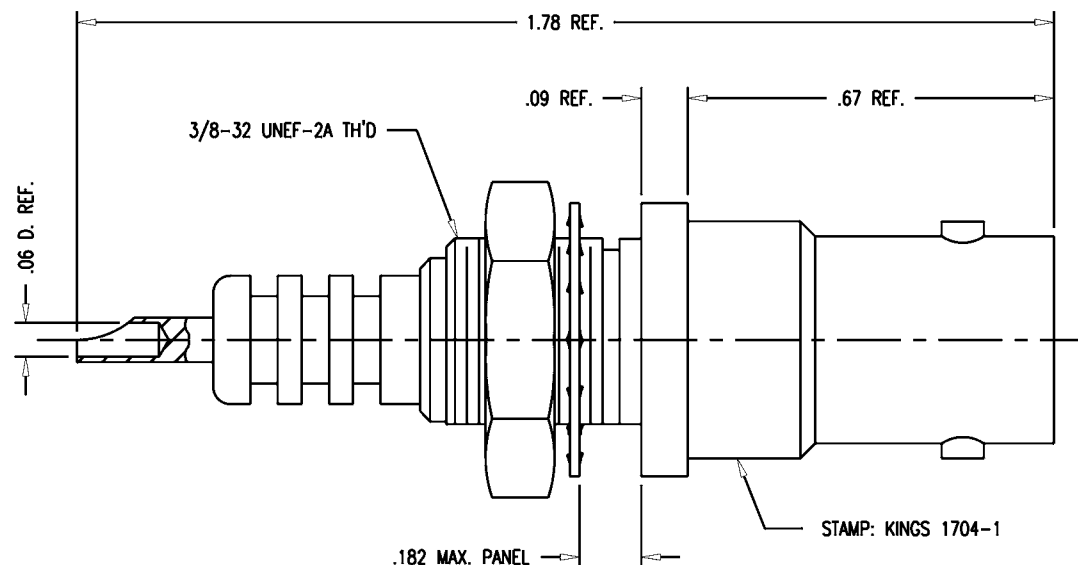
DASH NO.	M CODE	MADE FROM
----------	--------	-----------

GSD

REVISIONS

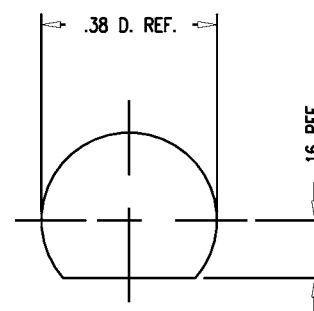
ISSUE	CHANGES
3	CN 34186 C REDRAWN KH 11/06/92
4	CN 37282 C PG 02/24/97

1704-1



NOTES:

1. INTERFACE PER MIL-STD-348, FIG. 314-1.
2. MATERIALS:
INSULATOR: TEFLON, ASTM-D-1457
LOCKWASHER: PHOSPHOR BRONZE, QQ-B-750
ALL OTHER METAL PARTS: BRASS, ASTM-B16
3. FINISHES:
CENTER CONTACT: GOLD PLATE PER MIL-G-45204
ALL OTHER METAL PARTS: KINGS TARNISH RESISTANT FINISH (TR-5)
4. ELECTRICAL CHARACTERISTICS:
NOMINAL IMPEDANCE: NON-CONSTANT
VOLTAGE RATING: 3500 VRMS
5000 VDC



MOUNTING HOLE

GSD

KAM2391

SCALE 4:1

APPROX SURFACE AREA

USED ON

REF:

RECEPTACLE, BULKHEAD, SHV, M

DRAWN KH	DATE 11/09/92
DESIGN LJ	DATE 11/10/92
APPR.	DATE

KINGS
ELECTRONICS CO., INC.
TUCKAHOE, NEW YORK 10707

1704-1