

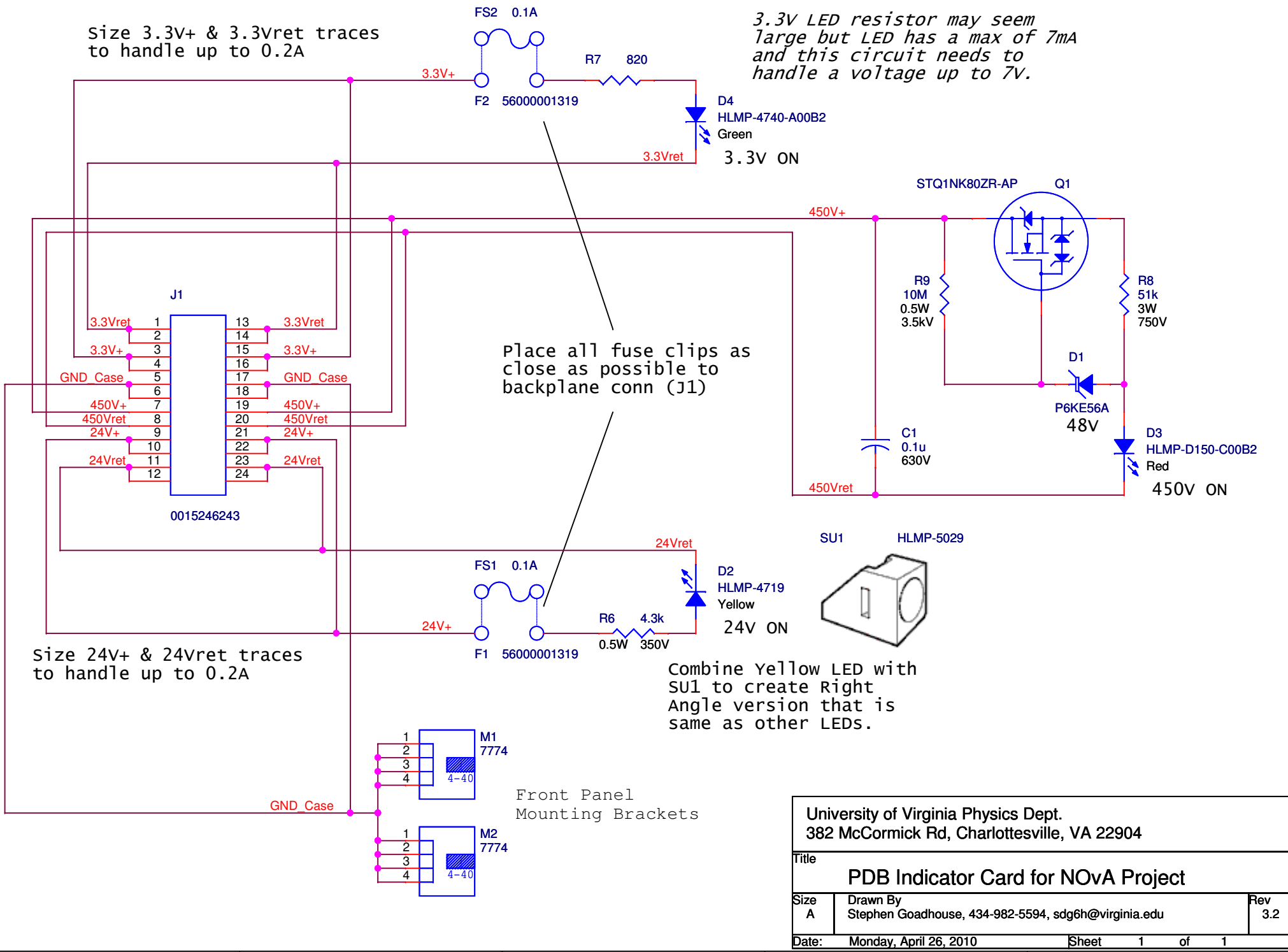
Size 3.3V+ & 3.3Vret traces to handle up to 0.2A

3.3V LED resistor may seem large but LED has a max of 7mA and this circuit needs to handle a voltage up to 7V.

Place all fuse clips as close as possible to backplane conn (J1)

Size 24V+ & 24Vret traces to handle up to 0.2A

Combine Yellow LED with SU1 to create Right Angle version that is same as other LEDs.



University of Virginia Physics Dept. 382 McCormick Rd, Charlottesville, VA 22904		
Title PDB Indicator Card for NOVA Project		
Size A	Drawn By Stephen Goadhouse, 434-982-5594, sgd6h@virginia.edu	Rev 3.2
Date: Monday, April 26, 2010	Sheet 1	of 1